

23 different energy panels:

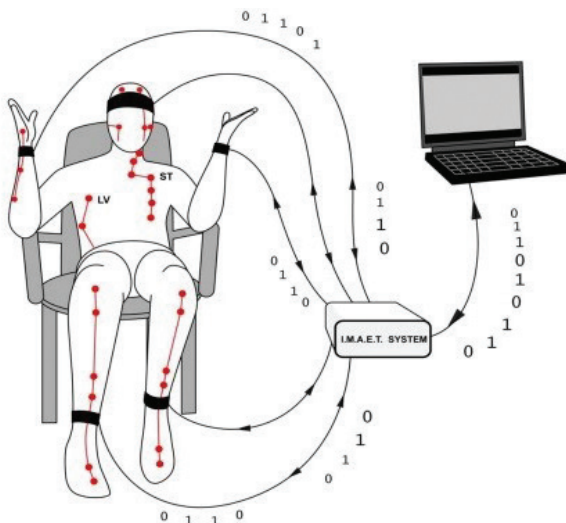
Energetic detection of Allergens and Pathogens,
Identification of emotional and physical stressors,
Brain wave tuning and Chakra balancing.

Non Invasive

Scan the Spine and release spinal tension,
by relieving inflammation!

Find the blockages in the Meridian system
of all 360 acupoints.

Acu/TCM treatments without needles!



The **IMAET** and it's harness system is functionally based on ancient Traditional Chinese Medicine principles, Quantum physics, modern cellular biology and epigenetic science.

The **IMAET**'s basic mode of analysis and scanning is a mathematical calculation of the distortion of thousands of stressor frequencies within the body's 100 trillion cells.

The harness system interfaces with all Meridians and measures the Qi energy by resonating real frequencies, translating energy into metabolic meaning and immune details.

Please Note: No medical or curative claims can be made.



imaet®

For more info on this technology

www.IMAET.com

Call Dr. Straile at 315-430 4211

Request an online Demo!

Leasing available.

imaet®

ASR™

Advanced Stress Relief™

**Quantum Biofeedback Technology for
Doctors, Chiropractors, Acupuncturists,
NDs and Energy practitioners.**

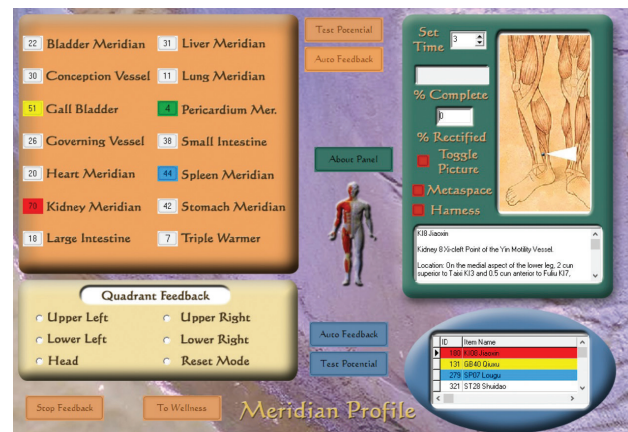
Developed and distributed by
Dr. Bernard Straile, BS, DC

ASR Instructor
SHOW Method Developer/Instructor

The **IMAET** is a Biofeedback Device used by health-care professionals in assessing energy imbalances present in the body's organism, such as allergies, emotional trauma and immune challenges. The feedback feature helps in achieving Genomic Stress Management, Energetic Harmony and Balance with an epigenetic focus.

The **IMAET** comes as a complete workstation, including a dedicated laptop or tablet computer (PC).

From allergies to Cellular Memory, Hormone balancing to Detox Stim, the Homeopathic Materia Medica, even 200 genes and SNPs are all at your fingertips to functionally modulate the body's cellular communications system.



Scanning results are listed by their highest Reactivity Values, which enables the practitioner to easily and quickly pick up on allergies, hidden infections, specific detox issues, even **SNPs, variants** and over **200 genes**. With this functional insight, the practitioner can construct an effective Feedback, resonating with Life's frequencies directly at the cellular level for profound clinical results.

You will receive Real clinical support in implementing the versatile **IMAET** into any Wellness Practice. It is very easy to use!!



*"All matter has its own unique vibratory signal and frequency. Every color, every sound, every planet, every atom, every enzyme, every vitamin, every virus, every gene and every protein has its own unique energy and frequency. It turns out that our epigenetic function interacts with the environment on that energetic level. It is within this energy plane that the **IMAET** interfaces and operates! Unlike dermal screening instruments, this technology measures evoked potentials and the reactivity level they receive in the cellular matrix of the body."*

—Dr. Straile